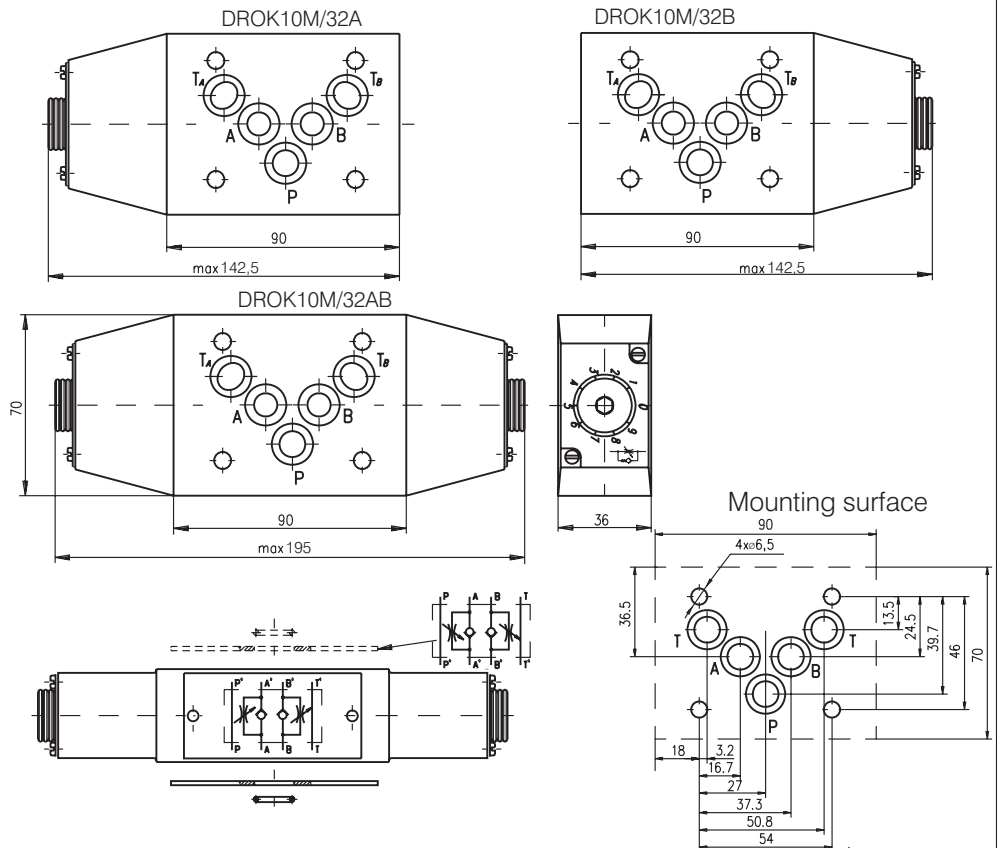
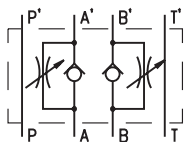
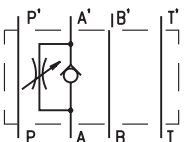


DESCRIPTION

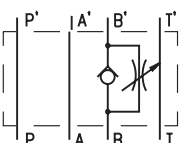
- ✓ Adjustable throttles with check valves for modular mounting-DROK10M/32-...
- ✓ The throttle check valves limit the flow by adjustable throttling spool at one direction , and allow free return passing on the other.
- ✓ Mounting surface CETOP5 (NG10)

DIMENSIONS

SYMBOL


DROK10M/32AB



DROK10M/32A



DROK10M/32B

ORDERING CODE

DROK	10	M	/	32	***
------	----	---	---	----	-----

Adjustable throttle with check valve

Nominal bore 10mm.

Modular mounting

Rated pressure: up to 320 bar.-32

 Valve location:

- at line A - A
- at line B - B
- at line A and B - AB

TECHNICAL DATA

Weight	DROK10M/32A and DROK10M/32B	2,100 kg
	DROK10M32/AB	2,500 kg
Max. Pressure		320 bar
Rated flow ($\Delta p=2,5$ bar.)		40 l/min
Cracking pressure (for check valve)		0,2 bar
Working liquid-hydraulic oils with characteristics:		
-viscosity		10...400 cSt
-degree of filtration		0,025 mm
-temperature		-20...+80°C